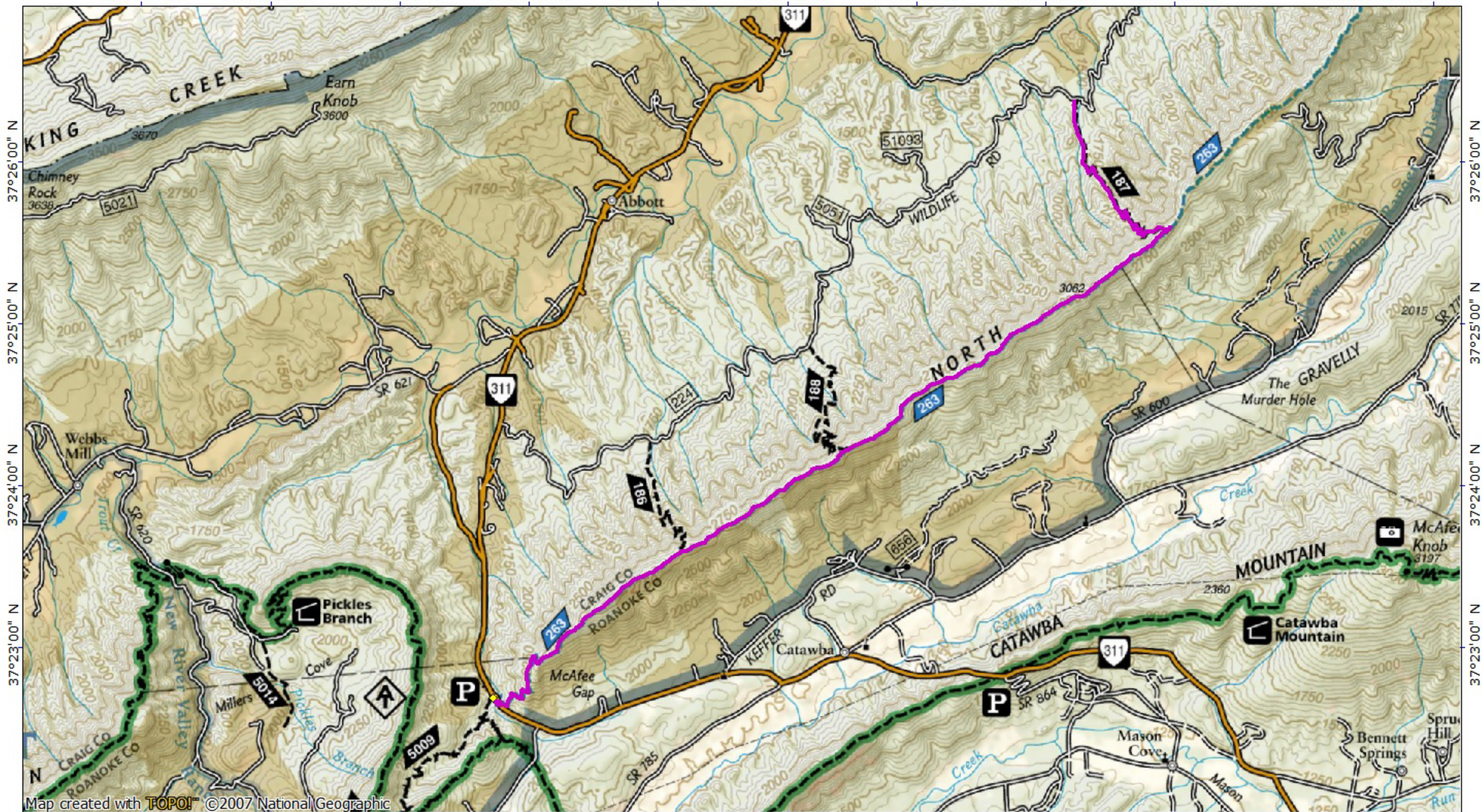
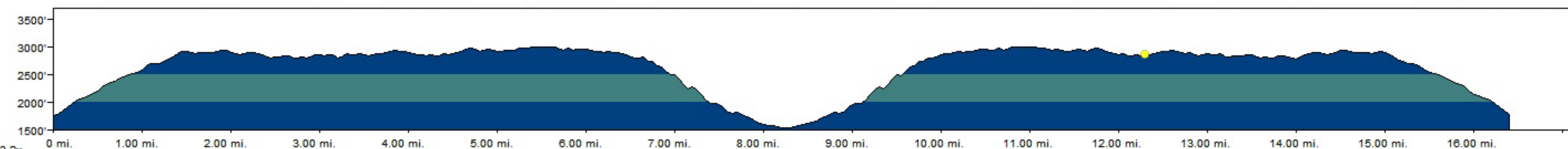


TOPO! map printed on 03/11/18 from ".tpo"

80°12'00" W 80°11'00" W 80°10'00" W 80°09'00" W 80°08'00" W 80°07'00" W 80°06'00" W 80°05'00" W 80°04'00" W WGS84 80°02'00" W



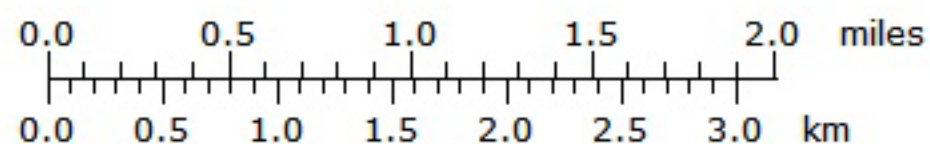
80°12'00" W 80°11'00" W 80°10'00" W 80°09'00" W 80°08'00" W 80°07'00" W 80°06'00" W 80°05'00" W 80°04'00" W WGS84 80°02'00" W



3.2x 0 mi. 1.00 mi. 2.00 mi. 3.00 mi. 4.00 mi. 5.00 mi. 6.00 mi. 7.00 mi. 8.00 mi. 9.00 mi. 10.00 mi. 11.00 mi. 12.00 mi. 13.00 mi. 14.00 mi. 15.00 mi. 16.00 mi.

●: 12.41 mi., 2880'

Gain: +4271' -4262' = +9'



MN TN
8 1/2°
03/11/18